



Hart News

Let's go for
food waste
collections!

Page 4



Find vital
support this
winter

Page 15



Welcome

Welcome to the latest edition of Hart News, with all the updates from your district council

Last month we launched food waste collections across the district. We know this is something our residents have been asking for and we are thrilled the successful roll-out is now complete.

Thank you to everyone who has started using the new service already, helping us increase our recycling rates. If you haven't started yet, carrot peelings, turkey bones and cheese rinds from the Christmas dinner or festive cheese board could be an excellent place to begin!

Speaking of Christmas, as always there will be changes to the waste and recycling collection timetables over the festive period. Take a look on page five for the all-important Christmas bin dates and never miss a collection. Could you be your street's binfluencer?!

Looking into the New Year, it's a busy year for elections across the county as well as next steps on local government reorganisation in Hampshire. Our submission went to Government at the end of September and we'll continue to keep you informed of the latest developments.

Delivering for Hart

“It's fantastic to end 2025 offering a new service to our residents. I'm looking forward to a new year working for those in Hart.”

Councillor Alan Oliver
Portfolio Holder for Development
Management and Waste Services



Stay up to date with our e-newsletter

We send out Hart News twice a year, but did you know we also have an e-newsletter?
We send this more frequently with the latest news and updates. Sign up on our website at www.hart.gov.uk

Keep in touch



We want to make it easy for residents to get in touch.

If you have a general enquiry, you can contact us by calling **01252 622122** or emailing enquiries@hart.gov.uk



Like us on Facebook:
[/HartDistrictCouncil](https://www.facebook.com/HartDistrictCouncil)



Follow us on X:
[@HartCouncil](https://twitter.com/HartCouncil)



Follow us on Instagram:
[/HartCouncil](https://www.instagram.com/HartCouncil)



Connect with us on LinkedIn:
[/Hart-District-Council](https://www.linkedin.com/company/Hart-District-Council)



Subscribe to us on YouTube:
Go to www.youtube.com
and search Hart District Council

Get the skills you need with free training courses

Are you looking to get back into employment, brush up on some skills or find health and wellbeing support?

We're committed to helping our residents get what they need, and are thrilled to now offer a wide range of free online training to residents.

We've joined forces with Rushmoor Borough Council and the award-winning local business SEEDL, who were recognised as New Business of the Year in 2023 by the Hampshire Business Awards.

With over 300 live or on-demand courses ranging from how to write a CV and prepare for an interview to overcoming stress and anxiety, we hope there is something for everyone, no matter where they are in their career journey!

Visit our online learning portal:
www.seedl.com/o/hartdistrictcouncilresidentshub



Looking to the future of local government

We've now submitted proposals for local government reorganisation across Hampshire, advocating for the creation of four new unitary authorities across the mainland.

The submission, titled "Close enough to be local, big enough to stay strong", outlines a visionary plan for modern, sustainable local government that aims to deliver better services while remaining deeply rooted in local communities.

Read the full submission and get all the latest information on the Local Government Reorganisation hub on our website

The proposal represents the collective voice of more than three quarters of local authorities in Hampshire.

Under the new structure, Hart would join forces with Basingstoke and Deane and Rushmoor Borough Councils to form a unitary authority for North Hampshire. Three additional unitary councils are proposed for the rest of the mainland with the Isle of Wight remaining its own island unitary authority.

We believe our preferred option most closely aligns with the principles for new unitary councils across Hampshire. This unitary size would keep a close connection to communities, allowing us to be responsive to local needs and giving people a say in their area.

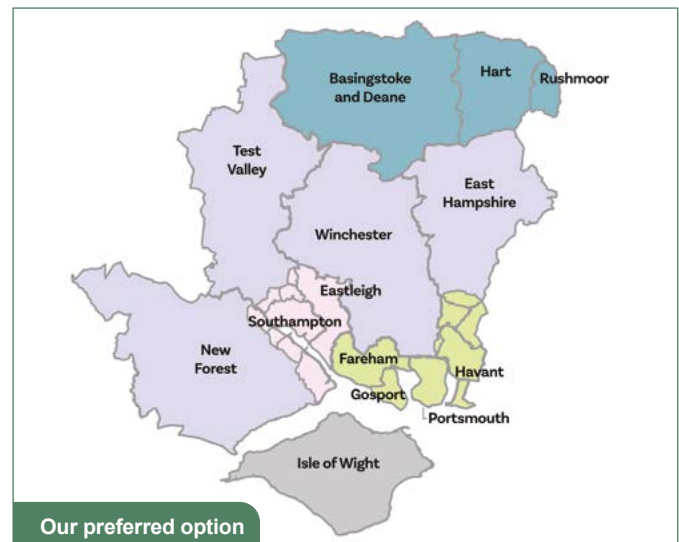
As well as our proposals, Hampshire County Council and East Hampshire District Council have put forward a separate submission for local government reorganisation. This recommends

“These options will create councils large enough to be sustainable but close enough to their communities to meet the unique needs of their areas and work for local people in the future.”

Councillor David Neighbour
Leader of Hart District Council



three mainland unitary councils and groups us with Basingstoke and Deane, East Hampshire, Rushmoor and Winchester in a Mid-North unitary. You can read more about their proposals on the Hampshire County Council website.



Next steps

The Government will now assess the various submissions and we expect them to consult publicly on options before the end of the year. Keep an eye on our website for the latest details on this.

What you told us

Making sure our communities get what they need is the most important part about local government reorganisation. We heard from over 1,000 Hart residents and businesses on what's really important.

- Residents prioritise listening to the needs of the local community and delivering high-quality, efficient services from their local council.
- Over 90% agreed that decisions about local services should be made by those who understand the local area and tailored to meet local needs.
- Over 75% said they would support reorganisation if it helped protect local services.
- Joining together with our neighbours Basingstoke and Deane and Rushmoor emerged as the most supported option for reorganisation.



Fuelling up with food waste

Recycling as much as possible is a key priority for us and we're thrilled with the successful roll-out of the weekly food waste collections.

As well as this new service allowing everyone to recycle more from the kerbside, the processes also allow us to turn food waste into new fuel sources. Your food now not only fuels you but also creates gas and electricity to fuel our communities.

Easy as pie! Top tips for using the food waste service

- Empty your indoor caddy as often as you need, as you would your kitchen bin.
- Moisture makes the bags break down more quickly. Reduce condensation by letting hot food cool first and not overfilling with mushy food.
- All food waste must be in liners. You can use up the ones supplied, reuse plastic liners such as bread bags or supermarket vegetable bags or purchase other liners.
- Food waste is collected weekly – more frequently than if it's in your black bin which is collected every two weeks.
- Different vehicles collect your food waste caddies so don't worry if it's still full when your other bins have been emptied.
- Look at where you store your green outdoor caddy if you think animals might be a problem, and make sure it's locked.

The road to recycled

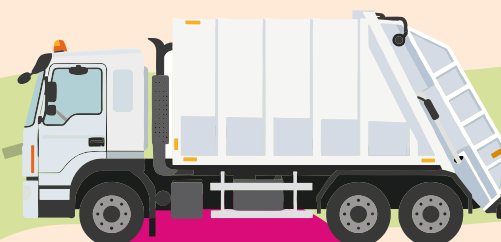


Put a liner in your indoor silver caddy and pop your food waste in as you go

Put filled liners in your outdoor green caddy or shared bin as often as you need



Got your number? Put it on your caddy so it finds its way home!



Your food waste is picked up weekly in special collection vehicles and sent to a local anaerobic digestion facility

Gas created during this process is converted to electricity AND cleaned to become gas for the National Grid!



Leftover food waste product is turned into a nutrient-rich biofertiliser used by local farmers



Don't forget the bins this festive season!

Usual collection	Waste, recycling and food revised collection day
Monday 22 December	No changes - collection on your normal day
Tuesday 23 December	
Wednesday 24 December	
Thursday 25 December	Monday 29 December
Friday 26 December	Tuesday 30 December
Monday 29 December	Wednesday 31 December
Tuesday 30 December	Friday 2 January
Wednesday 31 December	Saturday 3 January
Thursday 1 January	Monday 5 January
Friday 2 January	Tuesday 6 January
Monday 5 January	Wednesday 7 January
Tuesday 6 January	Thursday 8 January
Wednesday 7 January	Friday 9 January
Thursday 8 January	Saturday 10 January
Friday 9 January	Monday 12 January
Monday 12 January	Tuesday 13 January
Tuesday 13 January	Wednesday 14 January
Wednesday 14 January	Thursday 15 January
Thursday 15 January	Friday 16 January
Friday 16 January	Saturday 17 January

We'll collect extra waste for the first refuse collection after Christmas. Please leave in bags next to your black bin.

We'll always take excess recycling. Leave dry, flattened cardboard (max 70cm x 70cm) next to the blue bin or use clear bags for other recycling.

Normal collection days from Monday 19 January. Check your collection dates any time at www.hart.gov.uk

Usual collection	Garden waste collection days (if subscribed to service)
Monday 22 December	No changes - collection on your normal garden waste day and week
Tuesday 23 December	
Wednesday 24 December	
Thursday 25 December	No collections – two week service break
Friday 26 December	
Monday 29 December	
Tuesday 30 December	
Wednesday 31 December	
Thursday 1 January	
Friday 2 January	
Monday 5 January	
Tuesday 6 January	No changes - collection on your normal garden waste day and week
Wednesday 7 January	
Thursday 8 January	
Friday 9 January	
Monday 12 January	
Tuesday 13 January	
Wednesday 14 January	
Thursday 15 January	
Friday 16 January	Don't forget garden waste subscribers can also put their real Christmas tree out for collection once the service resumes.



You can take your real Christmas tree (minus the decorations) to one of our tree recycling points across Hart between Friday 2 and Saturday 31 January. Search our website for full details and locations.

The trees will be turned into ProGrow soil conditioner and wood chippings for our green spaces.

Earning whilst learning

Working as a ranger requires a blend of practical skills, ecological knowledge and community awareness.

This can take years to accumulate, so the funding we receive from St Edward Homes Ltd for our trainee ranger role really makes a difference.

On behalf of St Edward Homes, the trainee ranger manages Hartland Country Park, which was established as part of the Hartland Village development.

Once a Ministry of Defence training area, the park is now host to woodland trails, a children's play area, a bike track and picnic areas. The work between St Edward and Hart District Council has ensured there is something for all visitors to the park, a testament supported by the park's Green Flag Award.

Our agreement with the developer allows apprentices to focus on learning the ropes and gain skills in habitat management, public engagement and conservation planning for this 70-acre site. This runs alongside a fully funded course, a Countryside Worker Level 2 Apprenticeship, at Sparsholt College.

Trainee ranger Hope said:
"After starting with Hart in September I've enjoyed how much I've learnt about countryside management, whilst earning a wage. The variety of facilities and habitat which I manage at Hartland has given me a solid foundation for my career as a ranger."



Creating wetlands at Whitewater

We've been taking on biodiversity improvement at Whitewater Country Park, working with ecological consultants Ecosulis to restore and improve habitats which help native species to thrive.

By undertaking wetland excavation and tree and hedgerow planting, we'll improve habitat variety but also aid visitors by improving the pathways - instead of water sitting on the paths, it'll sit in our new ponds!

The changes will also strengthen vital ecosystem services – including air and water purification, flood mitigation and carbon storage – supporting long-term sustainability.



Our excavation works are now wrapping up at the site, and we are looking forward to entering the next stage, planting trees and hedgerows.


National Tree Week

22 – 30 November

Supported by The Tree Council and partners, National Tree Week brings together the conservation sector, volunteers and tree-lovers to mark the start of the annual tree planting season. Trees are a vital part of what makes Hart, and we're lucky to have a wide variety of species across the green spaces on our doorstep.

Our Countryside team shares some of their (tree)top Hart specimens!



 **Hartland Country Park Beech 'phoenix tree'**

Trees like this one are known as phoenix trees due to their habit of falling, re-rooting and then continuing to thrive. There's many throughout the district on different species. How many can you find?

Hart's new green machines!

We've committed to protecting the area we live in by reducing our carbon emissions where we can. We've recently purchased some new machines to help us manage our sites to the highest standards while also tackling climate emissions.

Two new electric buggies have replaced our diesel All Terrain Vehicle. With zero emissions and reduced noise levels, these are perfect for working on our countryside sites. We've also added an electric ride-on mower, for clean, quiet, efficient work.

Our new Eco Green Composter is also helping us manage our (large amounts of!) green waste sustainably. Designed for efficiency and low environmental impact, this machine processes everything from grass clippings to tree branches. This drastically reduces our waste volume, the remaining being added to our established compost heap at Edenbrook Country Park. When ready, this lovely compost is used by the neighbouring Community Garden, reducing our carbon footprint further by preventing green waste being transported further afield.

As well as reducing carbon emissions, making these changes is improving air quality, lowering operational costs through reduced fuel and maintenance expenses and demonstrating what positive changes can be made while maintaining service standards.

Look out for one of our new green machines in your local countryside site!



Fantastic work from Fleet Pond volunteers

Fleet Pond Society is a voluntary group working in partnership with our Countryside team to protect and manage Fleet Pond Nature Reserve. Every Friday morning their fabulous band of volunteers carry out a variety of tasks around the pond.

Work ranges from sapling and vegetation clearance, path repairs, erecting fencing to litter picking. There's something for everyone and at the 11am break, chocolate biscuits are provided. All you have to bring is yourself, protective gloves and your tea, coffee, water.

If you'd like to come along and help to conserve this beautiful place, please contact volunteers@fleetpond.org.uk. You'd be very welcome.

To learn more about Fleet Pond Society, please visit www.fleetpond.org.uk



Bramshot Farm Country Park Veteran Oaks

These large trees are estimated to be around 300 years old. They've lived through declines and seen the reintroduction of many species like the Red Kite and White-Tailed Sea Eagle. Many have historically been part of field boundaries.



Edenbrook Country Park Oak

This oak was reduced around five years ago due to a large cavity and safety concerns. It continues to thrive and its cavities has played host to many nesting birds since.



Odiham Common Beech

This is the root plate from a previously fallen veteran beech. The main trunk and root plate were left, as the tree was showing signs of regrowth. In the year since it's fallen, the uprooted area has become host to ferns, various fungi and flowering plants species.

Making a difference, one fix at a time!

We're using our grant funding to help local organisations deliver projects or activities to reduce their carbon emissions. Earlier in the year, we awarded funding to three local organisations, who each received a share of £19,000. One of these organisations was Fleet Repair Café. We speak to Kate from the café on the difference this has made.



Hi Kate, how is the funding helping the café?

The grant funding has allowed us to raise the profile of the Repair Café, using social media posts and flyers. Now even more residents know about us and more volunteers have joined too including two young people completing their Duke of Edinburgh Awards! The funds have also allowed us to buy more tools, so our volunteers can 'breathe life' back into even more items that may have otherwise been discarded.

What sort of impact has the Repair Café made?

Just under 800kg of waste has been saved from landfill and over seven tons of greenhouse gas emissions have been avoided since we started in 2024!

What's the most memorable item the team has fixed?

We've fixed over 400 items since we started, ranging from broken zips, hair straighteners and vacuum cleaners through to a slow cooker with a broken handle on the lid. But probably the most memorable was a broken Dictaphone. When we repaired it, the visitor was able to hear recordings of his late father's voice again.

Wow, that's really special. So as well reducing emissions and fixing pre-loved items, does the Repair Café help residents save money?

Absolutely. Our estimates suggest that we've saved Hart residents over £32,000 in replacement item costs since we started.

If you have an item that you think could be fixed, why not visit Fleet or one of the other Repair Cafés in the district. Check out our list of Repair Cafés on the 'News' pages of www.impacthart.co.uk



Proud to be Hart

We care about keeping Hart clean for everyone's enjoyment. When public spaces are cared for, people are more likely to respect and maintain them, contributing to a positive cycle of improvement.

We've launched our *Pride in Place* campaign, aimed at enhancing the visual appeal of our towns and villages by tackling the persistent issues of litter (including fly-tipping), graffiti, unauthorised banners and estate agent boards. These last two are often left up long after events have ended or properties have been sold and create unnecessary clutter which detracts from the beauty of our shared spaces.

A clean and well-maintained environment not only looks better - it also encourages residents to take

Unauthorised banners before being removed



pride in their surroundings and helps foster a sense of safety and community.

Over the coming months, we'll be rolling out further initiatives to support this campaign. We welcome reports from residents about unsightly or overgrown public areas and any of the above issues. These can be sent directly to the council at **environmental.enforcement@hart.gov.uk** or submitted via **fixmystreet.com**.

By working together with residents, businesses and local services, we can ensure Hart remains a district people are proud to live and work in.

Rural crime support

Hart's beautiful countryside is one of its greatest strengths, but we know residents and businesses in isolated rural areas can face additional challenges.

They often experience higher levels of fly-tipping and theft as well as hare coursing and poaching. We are working on a plan to tackle rural crime, putting stronger connections with villages and rural residents at the centre of our work.

By teaming up with Hampshire Constabulary's Country Watch officers, who already work closely with rural businesses, the Hart Community Safety team are focused on non-business rural residents to share key crime prevention messages and make sure every voice is heard. Together, we will tackle rural crime directly.

By listening, learning and working together, we're hoping to help build a safer, stronger and more connected countryside. Hart's rural communities are at the heart of our district, and we're committed to keeping it that way.

For further information contact
communitysafety@hart.gov.uk

Tackling fly-tipping to keep Hart tip-top

Fly-tipping is damaging to our environment and we continue to work hard to tackle every incident reported to us. Recently we've:

- Checked commercial vehicles in a joint enforcement operation, to make sure drivers held valid licences.
- Took action against an unlicensed waste carrier who advertised on social media then dumped the waste in Fleet. This resulted in a £1,800 fine and 200 hours of community service.
- Tracked down two offenders who dumped waste behind a local restaurant, resulting in combined fines of over £3,000.
- Investigated over 100 fly-tips across Hart.

Act locally, impact globally

Impact Hart brings together residents and organisations across Hart who want to take positive steps to tackle climate change.

From schools and parish and town councils, through to businesses and residents, we can all do our bit.

So whether you are looking for local information on how to reduce your carbon footprint, or want to know about environmentally-conscious events in the area, you'll find up-to-date information at **www.impacthart.co.uk**.

We can make a real impact in the community by coming together to tackle climate change. If you are a local group hosting a climate change related event or have some news to share, email the team at **climatechange@hart.gov.uk** and we'll include it on Impact Hart!



IMPACT HART SUSTAINABLE HOMES AND GARDENS

**Saturday 29 November, 10am – 3pm
Hart Shopping Centre, Fleet**

The Impact Hart team will be joined by Hart Voluntary Action, our Countryside team, local energy advisors and more at the Sustainable Homes and Gardens event.

Come along and chat to us about improving the efficiency of your home, take a look around our Retrofit House and let the kids enjoy some of our activities including free face-painting!

Visit the new Eco Hub

If you're interested in climate change and eco-friendly volunteering opportunities, Hart Voluntary Action's new Eco Hub is definitely worth a visit.

Located on the first floor of Hart Shopping Centre, the Hub will host workshops and meetings around the topic of climate change and sustainability.

You can also discover volunteering opportunities in the area.

The Hub, which was part-funded by Hart District Council, is open on Tuesdays from 9.30am to 12pm.

To find out more visit **www.hartvolaction.org.uk/community-services/eco-hub**

Charge in Hart!



Many people are making the switch to EV vehicles. To make this switch even easier, fast EV chargers are available in six car parks across Hart. There are plans for further charge

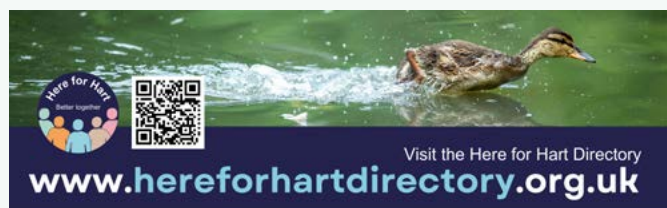
points shortly, including at Hart Leisure Centre so you can charge up while you work out.

Chargers are currently available in the following car parks:

- Church Road, Fleet
- Hart District Council Offices, Fleet
- Victoria Road, Fleet
- Crossways, Hook
- The Bury, Odiham
- Deer Park View, Odiham



Providing what's needed across Hart



People across our communities need support in a variety of different ways. While we endeavour to be here for our residents our fantastic local organisations provide invaluable support for thousands of people in Hart.

Our Here for Hart team, initially formed in response to the Covid pandemic, works to support these organisations based on local needs such as unpaid carers, older adults, unemployment, the Homes for Ukraine scheme, cost of living and the Armed Forces.

We work with key partners including the NHS, Hart Voluntary Action, Citizens Advice Hart, Jobcentre Plus and local charities. We are dedicated to supporting local organisations and delivering projects to benefit the community.

Recently, we've:

- Brought local people together with employers at a Jobs Fair with the Department for Work and Pensions. Attendees met with over 30 organisations who had employment, volunteering and job support opportunities
- Established an Older Adults Forum, where we work with local charities and support services
- Run a health fair with Fleet Market so residents could connect with health organisations
- Continued to facilitate the Here for Hart working group and work with Hart Voluntary Action on the Here for Hart Directory

Planning for a strong future

We're working to shape the future of Hart by putting together a new local plan. This will help us plan for the new homes needed over the next 20 years, in line with housing numbers set by the Government.

To meet these numbers, new sites must be found across the district. These will be used for new homes but also other uses such as economic development and green spaces.

We are currently running a call for sites, asking local people and organisations to suggest where may be suitable for development to give us as much choice as possible. To suggest a site, please visit www.hart.gov.uk/planning-and-building-control/planning-policy/call-sites. Sites can be submitted online until 4 January 2026.

New development must be sustainable, well-designed and supported by infrastructure. It will bring more affordable homes and jobs for local people, while protecting valuable wildlife sites and enhancing biodiversity.

A well-advanced local plan helps us control where new development happens in Hart and forms part of our legacy before local government reorganisation planned for April 2028.

We'll be consulting throughout the new local plan policy. Please email planningpolicy@hart.gov.uk to be informed of local plan consultations. Find information on the current plan, future projects and planning policy at www.hart.gov.uk/planning-and-building-control/planning-policy

**Salesian College
Farnborough**

A place to flourish and thrive!

- Excellent Exam results
 - GCSE 82% pass rate grades 9 - 6
 - A Level results ABB on average
- Small Class Sizes
- Subject Specific Teachers
- Outstanding Pastoral Support
- Extended Learning Stretch & Challenge
- 75% of Year 7 students represent the College in competitive sport
- All year groups involved in School Production
- Extensive Extra-curricular programme

To discover more, scan the QR Code:

SALESIAN COLLEGE

Get set for 2026 elections!

Local elections give everyone in an area a chance to have a say on who represents them.

After a quiet 2025, 2026 is looking to be a bumper year for elections! Voting for many different things on the same day may be confusing, so use this handy guide to understand what you are voting for.

With the local government reorganisation process, these may be subject to change but currently we are expecting the following elections in May 2026.

Hampshire Mayoral - New strategic authority

This is a new position, and the Mayor will cover the whole of Hampshire, heading up a new strategic authority created by the Devolution process.

You'll choose one candidate and this is separate to the new unitary councils expected after local government reorganisation.

What is devolution? Devolution will create a Strategic Authority for Hampshire, to provide strong leadership on issues like housing, highways and transport, economic growth and health.

This is separate to local government reorganisation (see page three for the latest on this).

Hampshire County Council

Services across the entire county including education, transport and roads, fire and public safety and social care.

Hampshire County Council elections were postponed in 2025 as part of the local government reorganisation process. We expect these to now be held in May 2026. You'll elect one councillor for your division – there are five in Hart district.

It's unlikely that councillor terms will be the usual four years due to local government reorganisation but we don't have details yet on how long terms will be.

Hart District Council

Local services such as waste collections, housing, Council Tax and planning applications

These are our elections! There are 11 wards in Hart with three councillors in each. We elect a third of councillors every year, one in every ward. Find all our councillors on the back of this magazine. Last year was a fallow year with no elections planned. You'll normally choose one candidate in your ward.

Parish and Town Councils

Services include community centres, play parks and public spaces

Not every parish and town council has an election next year.

There are 21 in Hart and elections in six:

- Church Crookham Parish Council
- Elvetham Heath Parish Council
- Fleet Town Council
- Greywell Parish Council
- Long Sutton and Well Parish Council
- South Warnborough Parish Council

You'll only be asked to vote in these elections if you live in the areas above and the elections are contested (more candidates than positions). You'll vote for multiple candidates as you are electing the whole council.

Postal votes: We've recently written to 6,000 Hart residents whose postal votes are expiring. If contacted, visit www.gov.uk/apply-postal-vote to reapply.

Affordable housing at any age

You might not expect a new lease of life as you get older, but for many people across Hart that's exactly what they are getting.



Campbell Place, Fleet

“Moving into over 55’s accommodation has been a good experience, a pleasant way of living. Rosefield Court is quiet and everybody is friendly - the quieter life I’ve been seeking.” Ronald

There are a variety of housing options across Hart designed specifically for older residents to live independently while enjoying a supportive and friendly community. These can provide secure, comfortable and affordable accommodation in later life.

Would you or someone you know like to live with people of a similar age and with similar interests or is your current home now too large for your needs?

Affordable housing options for rent

There are several housing schemes available for rent offering residents aged 55 and over a modern home living alongside like-minded people. These are managed by housing associations and offer great features including communal spaces for socialising and activities.

Popular schemes include Rosefield Court (Hartley Wintney), Hedge Croft (Yateley), Cotswold Court (Fleet) and The Signals (Hook), with a welcoming environment and features that allow you to enjoy living independently.

Need more support?

For those who may need a little more assistance, Campbell Place in Fleet is Hart's dedicated extra-care housing scheme. Built in 2011, it offers independent living flats for residents aged 60+ with a range of care needs. Benefits include 24/7 access to onsite care staff, bistro and a communal lounge, garden, hair salon and activities room.

“I love living in assisted care because it’s a lot safer and the staff here are wonderful!”
Campbell Place resident

Want to know more?

To apply, join the Hart Housing Register at www.hart.homeconnections.org.uk. For more information search ‘affordable housing’ on our website or get in touch with our housing team on 01252 774420 or housing@hart.gov.uk.

What about buying aged 55+?

An Older Persons Shared Ownership scheme allows part of a home to be purchased while rent is paid to a Housing Association who own the remaining share.

High quality, two-bedroom apartments are available through this scheme at The Signals in Hook. Delivered by Anchor, the last few remaining properties are available for sale. Contact Anchor on 01256 588700 or visit their website at www.anchor.org.uk for more.



Local resident finds new strength



At nearly 72 years old, local resident Norma Pickles is proving that it's never too late to take control of your health.

After battling knee problems for over two decades and high blood pressure, Norma was referred to Hart Leisure Centre by Everyone Active's GP Exercise Referral Programme – a decision she describes as life-changing. The programme supports people with long-term health conditions to move more to improve their health and wellbeing.

Norma couldn't be happier with the results. "When I first started the 12-week programme, I was very nervous – but also excited. Overall I feel so much stronger and more confident. I would definitely recommend the programme and it's given me a real boost – both physically and socially."

Everyone Active manage Hart Leisure Centre in partnership with Hart District Council. For information about the GP Referral Programme or leisure centre, visit the Everyone Active website.

Bringing empty homes back to life

What would you do if you noticed an empty property, or found yourself with an empty house? We've prioritised bringing empty homes back into use to provide more houses for those who want to make a home in Hart.

As part of this, we recently arranged for a bungalow in Church Crookham to be sold at auction after it stood empty for more than a decade. The site attracted anti-social behaviour, resulting in frequent police calls, with neighbours worried about the state of the property.

VIVID

**Shared Ownership Homes at
HARESHILL, CROOKHAM VILLAGE**



New Shared Ownership 1 & 2 bed homes in Crookham Village, Fleet.

Buy shares from just 10% – that's as little as £26,500* for a 1-bed apartment, with rent to pay on the remaining shares.

**APPLY NOW:
yourvividhome.co.uk**

Follow us on Instagram @wearevividsales



Eligibility conditions apply, see yourvividhome.co.uk for more information.

*Example is based on a 1-bedroom apartment at Harehill, Crookham Village, purchasing a minimum share of 10% for £26,500 (full market value of £265,000) and paying rent on the remaining share. Subject to lender criteria and availability. All information correct at time of production- September 2025.

“ Properties sat empty are a huge waste to both the owner and local community. We're committed to bringing empty homes back into use. ”

Councillor Peter Wildsmith
Portfolio Holder for Housing and
Community Services



Many unsuccessful attempts were made to rectify the issues with the legal owner before we stepped in to secure the bungalow and clear the garden. While an Enforced Sale is always a last resort, no resolution could be reached and a decision was made to put the property up for auction.

An Enforced Sale is a legal process by which a person or organisation can sell a property or land if they are owed money and the owner does not repay the debt.

If you're aware of an empty or derelict property, please let us know. We can help owners with practical support and advice and all work together to bring homes back into use.

Find more at www.hart.gov.uk/housing/private-sector-housing/empty-properties

Finding it hard to cope financially? We're here to help



A rising cost of living means more people than ever are struggling to make ends meet. If you're on a low income, receiving benefits, or facing unexpected money problems, our Hardship team is ready to help.

Thanks to funding from the Government's Household Support Fund, we can help those facing financial hardship this winter. Whether you need urgent help with household costs, support with food and energy bills, or advice on managing debt, we provide confidential and caring support tailored to your situation.

Who can get help?

Hardship can affect anyone. Whatever your circumstances, you shouldn't feel embarrassed to ask for help. We'll listen, offer advice and guide you to the best support available.



For local debt support, budgeting advice, foodbanks and more go to www.hereforhartdirectory.org.uk and select the Money Matters category

There's no place like home

Helping our residents find a safe place to live is a priority for our Housing team. But we also know while finding a place to live is one thing, keeping it can be another.

Whether you're renting in the private sector or with a housing association, it can be a stressful balancing act juggling rent and household bills especially with the current cost of living.

Our tenancy sustainment service is all about making sure the keys stay in your pocket and the 'Welcome' mat stays firmly at your front door.

Our Housing team is dedicated to supporting you at every stage. Our priority is to help maintain tenancies, rather than having to unnecessarily move.

Early prevention is key - the sooner you come to us, the more we can do to advise you. We'll work with you and your landlord to tackle problems head-on so you can swap sleepless nights for peace of mind.

Please do not hesitate to ask for help. Reach out, we are here to help you feel secure in your home. Contact us on rentdeposit@hart.gov.uk or 01252 774420

What help is available?

We may be able to offer:

- emergency food and fuel vouchers
- help with rent or Council Tax arrears
- access to foodbanks and community pantries
- referrals for debt advice, mental health support and housing help
- advice on budgeting and benefits

How to contact us

If you or someone you know is struggling, don't wait - get in touch. Email us at hardship@hart.gov.uk or call **01252 774420**. All messages are handled with care and kept confidential.



You can find details of all the help available on our website. This includes:

- For rent arrears or unavoidable expenses such as sickness, you could apply for a Discretionary Housing Payment if receiving Universal Credit or Housing Benefit.
- If circumstances have changed since you moved in such as losing your job or illness, search our website for 'benefits calculator'. Use this tool to find out if you are entitled to any other unclaimed benefits.
- The Household Support Fund is a short-term solution to help households pay for food and utility bills.
- We'll work with both landlord and tenants on an affordable payment plan to clear rent arrears.
- If you're struggling to manage your finances, you can arrange for your Universal Credit Housing payment to be paid directly to your landlord.
- If you need to move but can't raise your own deposit, you may be eligible for our rent bond scheme.



Who does what in Hart

Scan the QR code or visit hart.gov.uk/about-council to find out which authority is responsible for what.



Unsure of your ward? Search for 'Wards' on our website for more information.

Your councillors

33 elected councillors make up Hart District Council. They come together regularly to debate issues and make decisions in meetings and committees.

Hart is divided into 11 wards, each represented by three councillors.

Blackwater & Hawley	Fleet Central	Hartley Wintney	Yateley East
Andy Brown	Katie Davies	Dr Anne Crampton	Stuart Bailey - Vice-Chairman
Robert Harward	Richard Jones	Spencer Farmer	Graham Cockarill - Portfolio Holder for Planning Policy
Bethany Woods	Alan Oliver - Portfolio Holder for Development Management and Waste Services	Tim Southern	David Neighbour - Leader and Portfolio Holder for Strategic Direction and Partnerships
Crookham East	Fleet East	Hook	Yateley West
Chris Axam	Daisy Khepar	Selena Coburn	Gerry Crisp
Gill Butler	Dan Taylor	Dermot Smith Independent	Richard Quarterman - Portfolio Holder for Climate Change and Corporate Services
James Radley - Deputy Leader and Portfolio Holder for Finance	Peter Wildsmith - Portfolio Holder for Housing and Community Services	Dr Jane Worlock	Alexander Drage
Crookham West & Ewshot	Fleet West	Odiham	Key <div>Liberal Democrats</div> <div>Conservative</div> <div>Community Campaign Hart</div>
Tony Clarke - Portfolio Holder for Digital and Communications	Angela Delaney	Chris Dorn - Chairman	
Tina Collins - Portfolio Holder for Community Safety and Regulatory	Steve Forster	Jon Hale	
Wendy Makepeace-Browne	Ben Thomas	Stephen Highley	