

5 Character Area 7: Bramshill

Description

- 5.16 This character area forms a distinctive swathe of forest and heath across the northern part of the district. Its boundaries are clearly defined by the forest edges to the north and south but to the east it embraces Bramshill Park, which contains open parkland but is intimately associated with the forest landscape. The eastern boundary marks the transition from more or less continuous forest to the more mixed heathland landscape of Yateley and Hawley Commons.

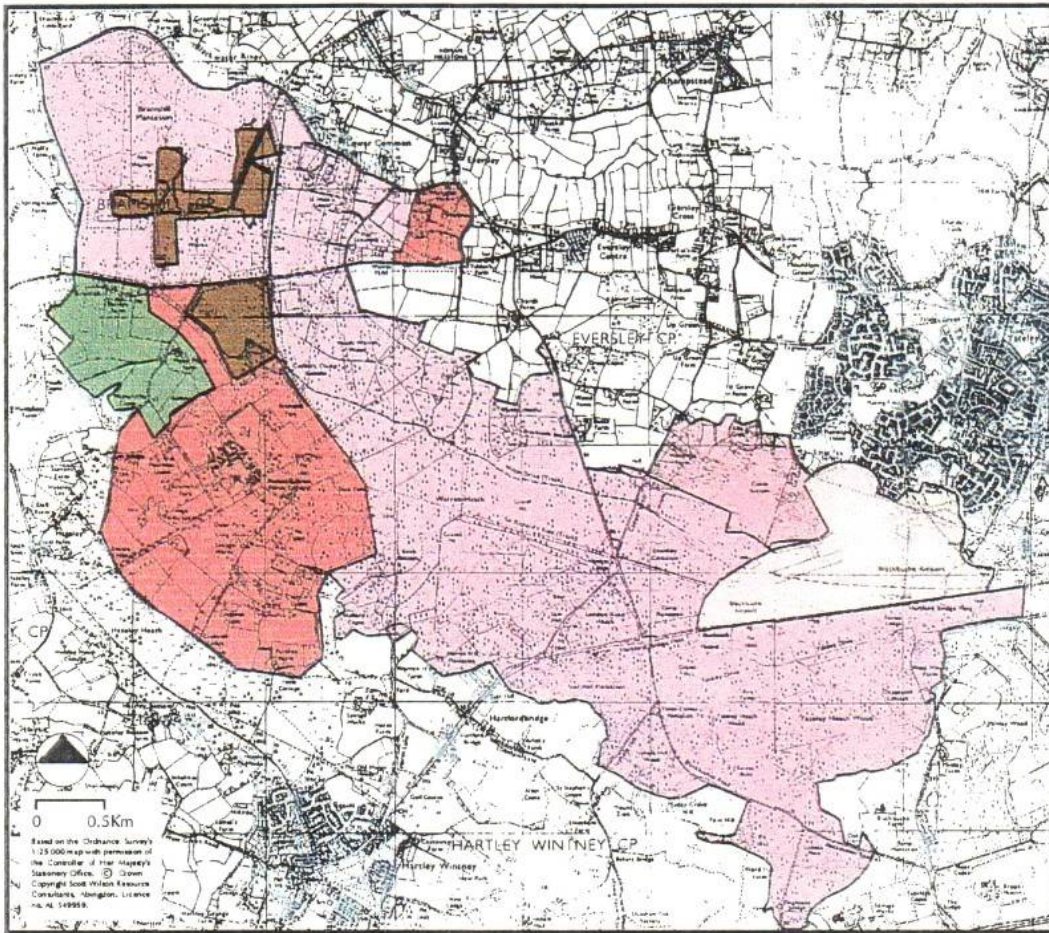


Main distinguishing features

- *extensive areas of dense woodland (mainly coniferous plantation) on former heathland creating a highly distinctive and enclosed forest landscape;*
- *evidence of former heathland character in the stands of birch and pine which fringe much of the woodland and the presence of gorse, heather, bracken and broom in cleared areas, glades, rides and forest edges;*
- *evidence of man's intervention in the landscape, in the form of commercial forestry, mineral extraction and landfill operations and the creation of formal rides, avenues and other 'designed' landscape features associated with the historic parkland at Bramshill House;*
- *a comparatively quiet and secluded character in the less accessible parts of the forest which contrast with the localised noise and activity and suburbanising influences of the major through routes, particularly the busy A30 and A327, and Blackbushe Airport;*
- *an absence of settlements and a very sparse pattern of farms around the edges of the forest area.*

Enhancement priorities

- 5.17 In general, the forest and parkland landscapes within this Character Area are of high quality (predominantly Category A) with few detracting influences, although mineral extraction and large-scale clear-felling causes localised intrusion within the forest areas. The overall



Bramshill landscape types (see Figure 4 for key)

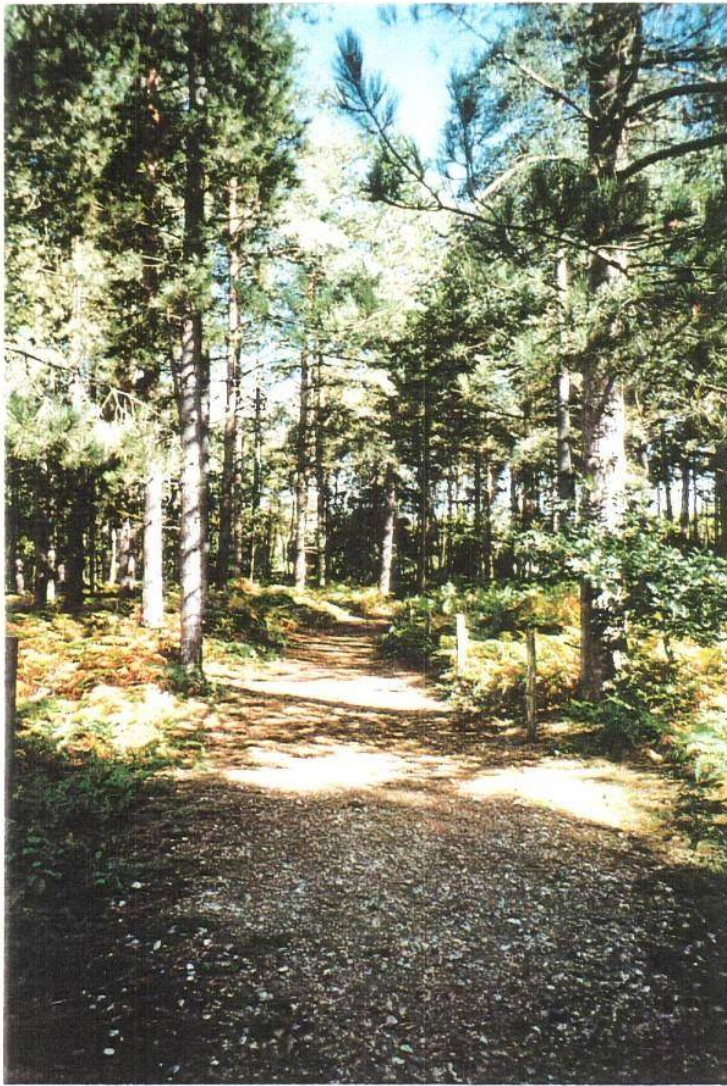


Parkland and forest landscapes near Bramshill

priority, therefore, is for **conservation** of landscape character and quality with appropriate management to enhance key landscape resources and minimise the intrusion of quarrying and road corridors.

Main enhancement priorities

- *management of historic parkland landscape at Bramshill Park and historic landscape features within surrounding areas*
- *management of existing woodlands and forest to maintain their presence in the landscape and diversify woodland structure and species composition*
- *restoration of small-scale mosaic of heathland, pasture and woodland around the fringes of parklands and densely wooded areas*
- *management of road corridors to maintain essentially wooded and enclosed character, to encourage development of heathy vegetation along roadside verges and to minimise the impacts of traffic on adjacent areas*
- *where possible, restoration of quarries to a mosaic of woodland and heathland in keeping with the character of the area*



*Coniferous forest on
heath near Eversley
Common*



*Mixed farmland and
woodland near Bramshill*



*Mineral extraction at
Heath Warren*