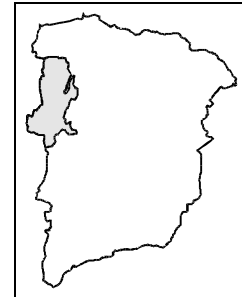


5 Character Area 2: Tylney

Description

- 5.4 This character area lies to the south of Wellington and is bounded to the west by the District boundary (although its character extends beyond), to the south by the settlement of Hook and to the east by the Whitewater Valley.

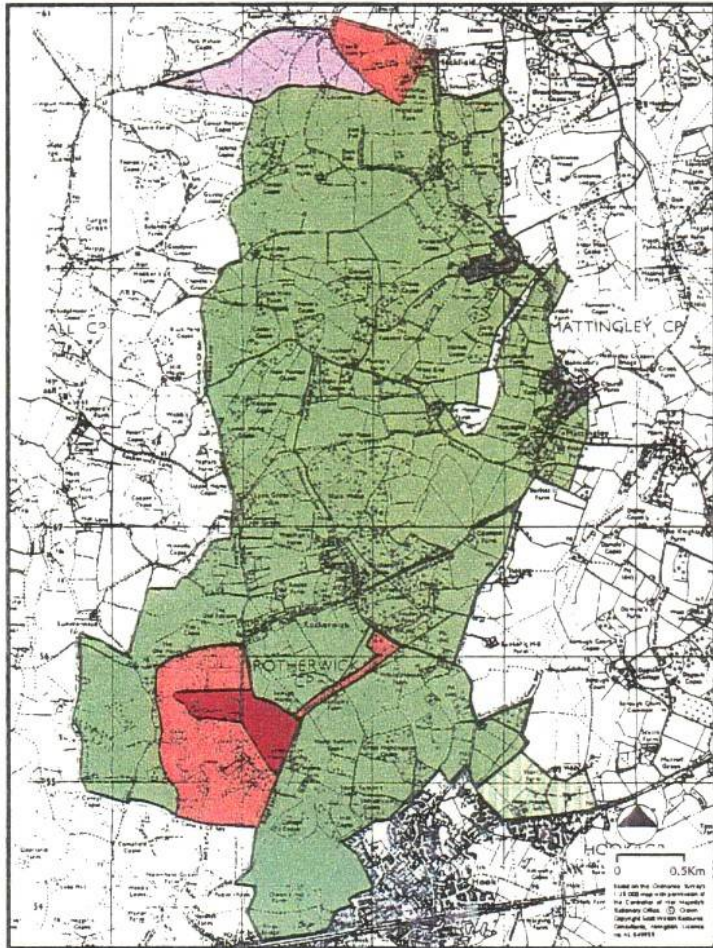


Main distinguishing features

- *a patchwork of mixed farmland and scattered blocks of woodland (including several remnant ancient semi-natural woodlands);*
- *a strong landscape structure of woods and hedgerows which provide a backdrop to open fields and contain views and a coherent landscape character;*
- *a dispersed pattern of rural settlements (the largest being Rotherwick and Mattingley) comprising small hamlets - often centred around village 'greens' - and scattered farms linked by a network of rural lanes;*
- *a comparatively remote, rural character due to the sparse road and settlement pattern and the enclosure provided by the frequent blocks of woodland;*
- *gently undulating landform which also helps to contain views and create enclosure.*

Enhancement priorities

- 5.5 Landscape quality and condition within this Character Area is generally good, with a strong structure of hedgerows, trees and blocks of woodland, much of which form remnants of formerly extensive parklands and grounds of country estates (eg. Tylney Hall). The overall priority is for **conservation** of these characteristics, while the need for intervention centres mostly upon localised **restoration** of weakened landscape structure and strengthening of particular landscape character that is in decline (eg. parkland).



Tylny landscape types (see Figure 4 for key)



Mixed farmland and woodland near Chandlers Green

5.6 There is evidence to suggest that this part of the District may have been more extensively wooded in the past. Therefore, while the characteristic mosaic of farmland and woodland should be maintained, larger-scale broadleaved woodland planting would be appropriate within this area and could make a valuable contribution to the realisation of a new 'Millennium Forest' centred around the former Forest of Eversley.

Main enhancement priorities

- *management of existing woodlands, hedgerows and trees to secure their long-term presence within the landscape*
- *new planting of broadleaved woodlands to reinforce the patchwork of wooded farmland and to restore a more heavily wooded character where appropriate*
- *management and restoration of remnant parkland and landscape features associated with country estates*
- *management and enhancement of village greens as distinctive landscape features within rural settlements*



*Mixed farmland and
woodland near
Chandlers Green*



*Village green and
traditional buildings
at Mattingley*



*Mixed farmland and
woodland with fringe
character near Hook*