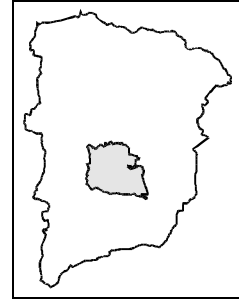


5 Character Area 10: Dogmersfield

Description

- 5.22 This character area is located within the centre of the district and is bounded to the west and east by the valleys of the Whitewater and Hart rivers and to the south by the edge of the chalk downs.

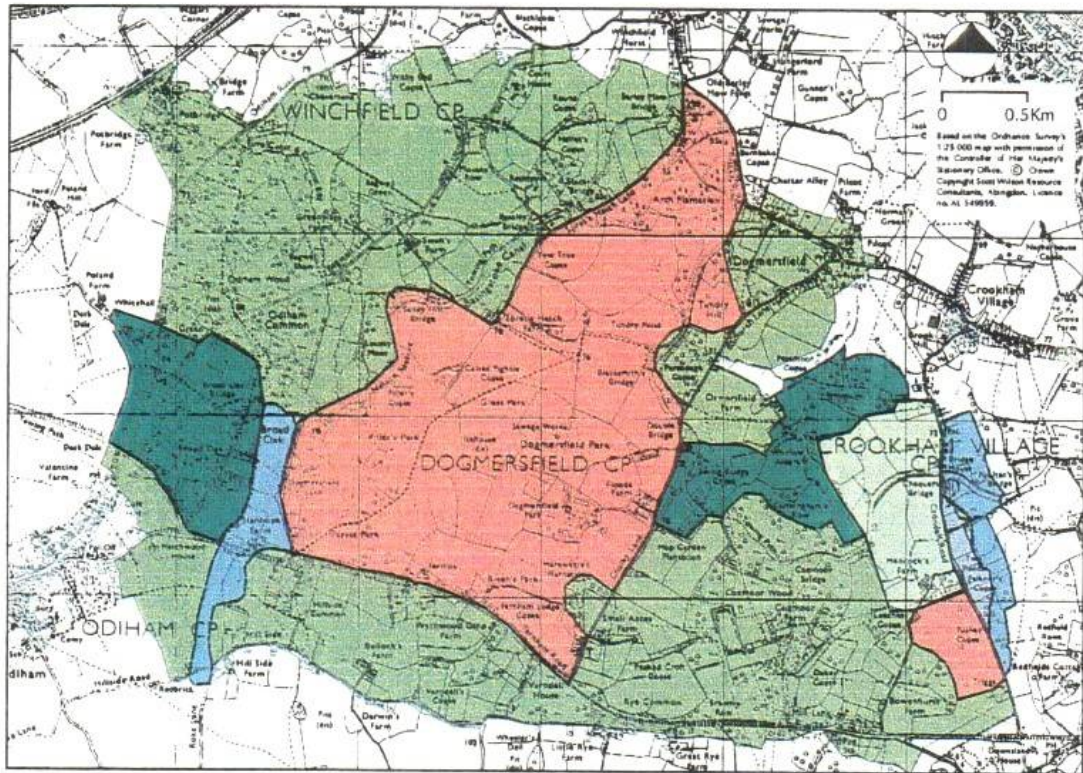


Main distinguishing features

- *the historic parkland landscape of Dogmersfield Park, with its formal gardens, lakes and woods, which occupies the core of this area and defines its overall character;*
- *the gently undulating landform which adds prominence to landscape features such as Dogmersfield House and individual blocks of woodland;*
- *a patchwork of mixed farmland and scattered blocks of woodland (including several remnants of ancient semi-natural woodland);*
- *a strong landscape structure of woods and hedgerows which provide a backdrop to open fields and contain views;*
- *the Basingstoke Canal, which winds through the area following the contours and is attractively wooded along much of its length;*
- *an essentially quiet, rural character with few, scattered settlements (primarily the village of Dogmersfield and hamlets of Chatter Alley and Pilcot) and dispersed farms;*
- *a mostly rural road network but with localised intrusion from the A287 running across the area to the south of the park;*
- *a network of overhead power lines emanating from the sub-station at Coxmoor Wood and which intrudes upon the rural, unspoilt qualities of the area.*

Enhancement priorities

- 5.23 The formal parklands, extensive woodlands, areas of remnant heathland, the canal corridor and small rural settlements, all contribute to a varied landscape of generally high quality and visual appeal.



Dogmersfield landscape types (see Figure 4 for key)



Parkland at Dogmersfield

However, some elements of the landscape are showing signs of decline, most notably Dogmersfield Park which has suffered from conversion of parkland to arable farmland and the loss or neglect of formal features, such as copses, avenues, parkland trees and boundaries. Field enlargement and loss of hedgerows and trees also affect other areas of farmland and are gradually leading to an erosion of the typically enclosed, wooded character of the landscape. Conservation and management of existing features, together with restoration of landscape structure and formal parkland character, are the priorities for intervention within this character area.

Main enhancement priorities

- *management of existing woodlands, hedgerows and trees to secure their long-term presence within the landscape*
- *management of landscape within canal corridor to retain its essentially enclosed, wooded and attractive rural character*
- *new planting of broadleaved woodlands, hedgerows and trees to reinforce the patchwork of wooded farmland and to minimise the impacts of main roads and traffic*
- *management and restoration of remnant parkland and landscape features associated with Dogmersfield Park and other areas of former parkland*
- *small-scale selective woodland clearance at Odiham Common to encourage restoration of a mosaic of open areas within woodland matrix*



*Basingstoke Canal near
Winchfield Hurst*



*Remnant parkland at
Dogmersfield*



*Mixed farmland and
woodland near Coxmoor
Wood*