



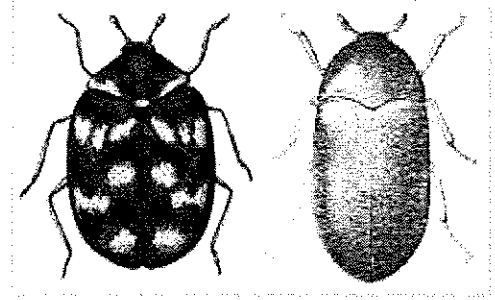
RESIDENTIAL ENVIRONMENTAL  
HEALTH

PEST CONTROL

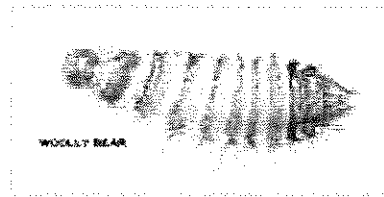
**CARPET BEETLES &  
WOOLLY BEARS**

## **WHAT ARE CARPET BEETLES AND WOOLLY BEARS?**

Carpet beetles are a fairly common pest, they occur naturally outdoors. There are several species of carpet beetle, for example:



The larvae are commonly known as woolly bears due to their characteristic covering of hairs.



## **WHERE ARE THEY FOUND?**

The carpet beetle is a major textile pest of the home where central

heating provides welcome uniform heating and fitted carpets provide harbourage for undisturbed breeding.

## **LIFECYCLE**

An adult beetle will produce up to 100 white eggs and deposit them in cracks and crevice. Within 4 weeks the eggs hatch and the woolly bears larvae embark on a continuous feeding binge and moult several times before pupating into the adult beetles. The larval life span is approximately 60-70 days but may increase or decrease depending on temperature, humidity and diet. The adult lives for up to six weeks during which time it will fly off in search of pollen and nectar and for egg laying sites. Adults tend to hibernate in cold conditions and to re emerge in the spring.

## **ARE THEY HARMFUL?**

Carpet beetles do not carry germs and spread disease. However the activities of the woolly bears will cause damage and can ruin carpets, animal furs and leathers.

## **PREVENTING CARPET BEETLES**

As the fully grown larvae are killed by temperatures in excess of 50°C, ironing linen, preferably with a steam iron will ensure freedom from infestation prior to storage of goods.

Clothes in tightly sealed cupboards or trunks can be protected by suitable slowly evaporating insecticides.

Spring cleaning can help together with regular brushing and vacuum cleaning of carpets and upholstered furnishings.

## **IF YOU HAVE A PROBLEM**

1. The source of infestation must be traced. Check the roof space for old's birds nests, wool based lagging, old carpets etc. Check sheepskin rugs and all clothing made from animal fur/skin.

2. Infested nests and inexpensive materials should be removed, hygienically disposed of and the areas from which they have been removed thoroughly vacuumed using a nozzle head and paying particular attention to cracks and crevices.

3. Treatment with a residual insecticide is then required for all affected areas to ensure all larvae have been killed. A residual insecticidal powder recommended for use against carpet beetles can be used. For items such as leather jackets, advice should be sought from professional traders in such products.

Not all insecticides are safe for use indoors, particularly where food is present or on certain materials/surfaces. If you use Pesticides available from hardware stores, make sure you read and follow all instructions printed on the container before use.

Hart District Council can also arrange suitable treatment from our experienced pest control operators. Please contact us to discuss your professional pest treatment needs.

**Prices (2009/10) Insects  
(not wasps)**

Domestic properties up to 3 bedroom house	£45
As above where the householder is on a means tested benefit	£30

**Call Hart DC Pest Control Services  
directly on 01252 774420**

Hart District Council  
Civic Offices  
Harlington Way  
Fleet  
Hants  
GU51 4AE  
Tel: 01252 622122  
Fax: 01252 626886  
[www.hart.gov.uk](http://www.hart.gov.uk)